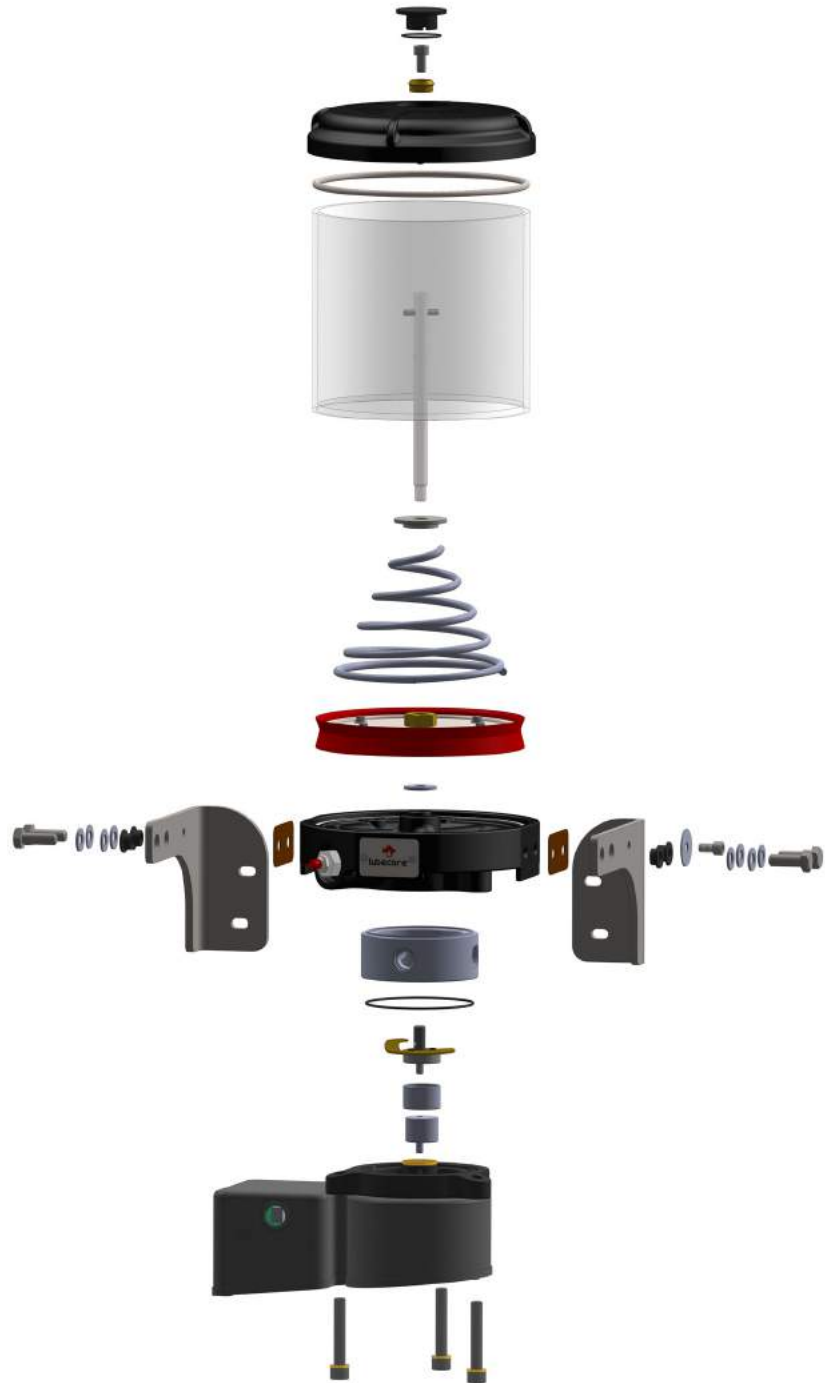




lubecore™

2016 Automated Lubrication Systems Parts Catalogue

LPC10.000



NEXT GENERATION AUTOMATED LUBRICATION

Document Information

Title: Parts Manual Automated Lubrication Systems

File ref: Lubecore_PC_001

Revision: 00

Publication date: January 2016

Revisions:

All rights reserved. No part of this publication may be copied and/or published by any means without obtaining prior written permission from Lubecore™. Due to continuous product development and improvement Lubecore reserves the right to update parts at any time, the contents of this manual may also be changed without prior notice. This manual applies to the standard version of the product. Lubecore cannot accept liability for any damage arising from the use of this publication. Please contact Lubecore in case of any questions related to the revision of, required service, repairs and or maintenance as described in this publication

Preface to the Manual

The operation instructions contain important information for the safe and proper operation of an automated lubrication system. It is recommended that a user read the instructions carefully prior to operation, Lubecore will not be held liable for damages and failures resulting from non-observance of these instructions. All instructions must be completed respective to national regulations pertaining to accident and environmental protection.

Disclaimer.

Lubecore™ International reserves the right to modify, correct, update, expand or delete items, descriptions, directions, explanations from this document without prior or direct notification of distributors, customers, dealers, end users or persons whether spoken or written.

All rights reserved.

This document is the property of Lubecore International, Inc. No part of this document may be reproduced or altered, copied and/or published by means of printing, photocopying, microfilm, scanning or any other form of electronic means without prior written permission from Lubecore International, Inc. This applies to all drawing, diagrams, charts, schedules etc. You are requested to contact Lubecore technical department for information concerning items not discussed in this document. Whilst this document has been prepared with the greatest possible care Lubecore International, Inc. cannot accept responsibility for errors and/or omissions.

Responsibility to ensure the safe operation of the automated lubrication system, the end user is responsible for the following:

- 1). The automated lubrication system shall be operated only for the intended use and its design shall neither be modified nor transformed.
- 2). The automated lubrication system shall be operated properly only if it is in a proper functioning condition and if it is operated in accordance with the maintenance requirements.
- 3). Personnel must be familiar with this operation manual and the safety instructions mentioned herein and observe these carefully.
- 4). Wastes (e.g. used oil, detergents, lubricant) must be disposed in accordance with relevant federal, state, provincial and territorial environmental regulations.

Service

Lubecore offers users full service in the form of advice, on-site installation assistance, training, etc if requested. In case of inquiries pertaining to maintenance, repairs and parts, Lubecore requires model specific data to enable us to identify the components of the automated lubrication system. Lubecore will not accept any liability for damages caused by the misuse of the designed automated lubrication system and/or the repair of said system by using any other parts other than Lubecore International original (OEM) parts.

Safety Precautions

- 1). Comply with all safety regulations applicable within the locality where all work is performed.
- 2). Always take the necessary precautions to prevent potentially dangerous situations from occurring during installation, inspection and maintenance. Always apply or use adequate safety measures to prevent personal injury and material damage, before starting work on any piece of the equipment.
- 3). The electrical system of the equipment must be disconnected before any work is performed.
- 4). The pressurized air system of the equipment must be drained of all air and pressure.
- 5). Inquire with the facilities management to the prescribed procedure to immobilize equipment and prevent operation of equipment. When these are not prescribed, remove any means that can start the equipment (ignition key / main power switch) and place indicator tags to show others not to start the equipment.
- 6). Never work underneath a machine, vehicle or any other piece of equipment, which is raised by a jack only. Always use a jack stand and check that the ground is firm and sufficiently flat.
- 7). Keep in mind that a vehicle with air suspension may drop of its own accord.
- 8). Only work underneath a cab if it is fully tilted and latched, or otherwise secured preventing accidental return-tilt.
- 9). Disconnect the ground battery lead from the vehicle's battery. This prevents electrical equipment from being inadvertently activated or otherwise electrically damaged.
- 10). Avoid working on a machine, vehicle or other equipment that recently was in use. Give time to allow components to cool (coolant, exhaust, turbo, etc).
- 11). A vehicle, machine or other equipment may only be operated by those who are trained and licensed to do so and are aware of all possible dangers.
- 12). Only use tools that fit and are designed for the specific task.
- 13). Adhere to all regulations, specifications and limitations as specified by the manufacturer of the machine, vehicle, equipment and /or engine.

Keep the environment in which you work clean for you and others.

Lubecore™
Modular Spyder
Parts & Service
Components

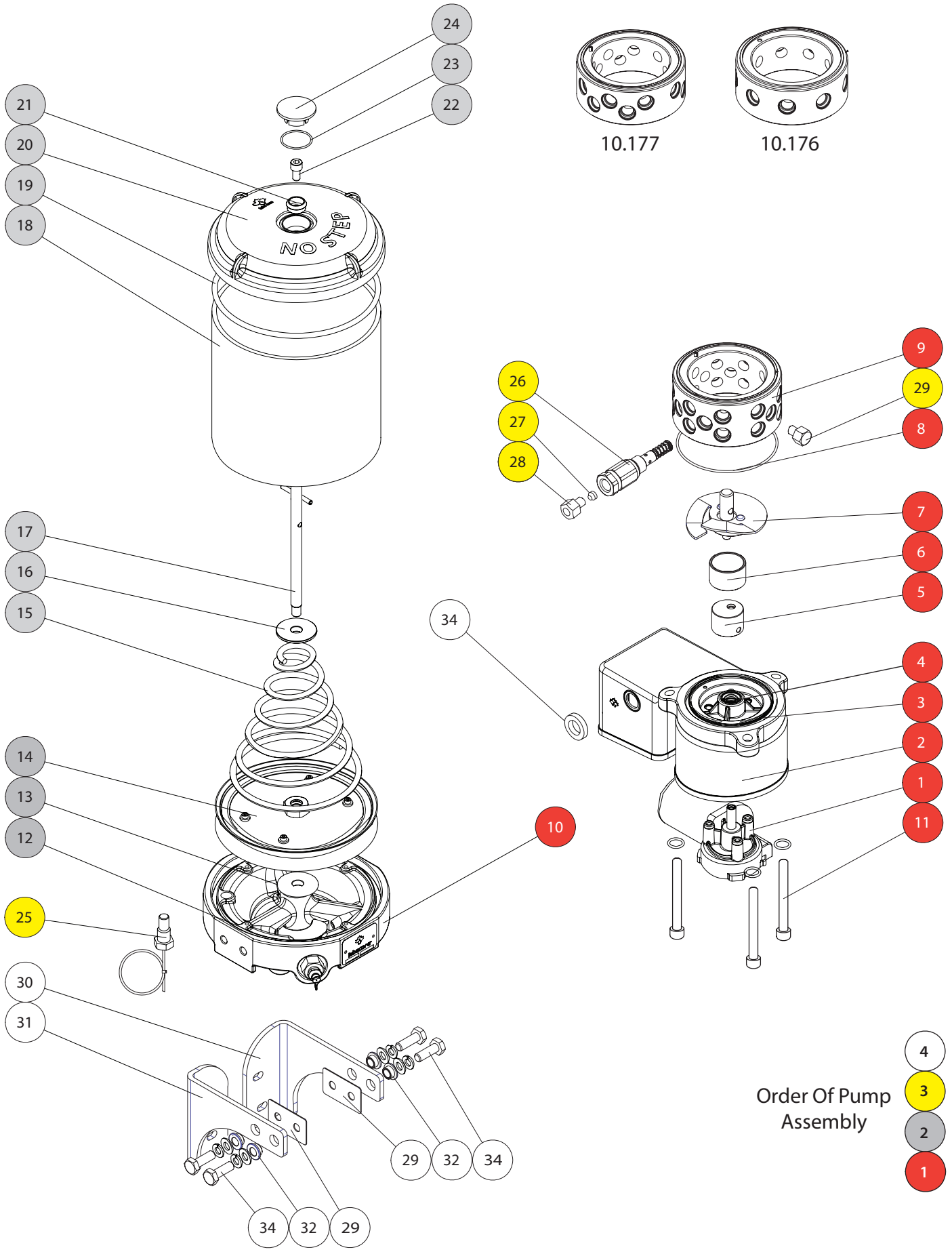


Modular Progressive Pump Base Assemblies

Pump	Part #	Description
57.001	10.213	Spyder 4KG Reservoir Module - Top Spring
	10.182	Spyder, Bottom, 12 Volt + Timer Module SECONDS
	10.177	Ring Module, 15 Port Spyder
	10.173	Cam Spacer
	10.174	Screw Plate Module
	10.190	Bolt Kit - 100mm (2L)
	10.109	Label (bottom) for Pump 1.6 X 9
	10.231	Label, Top of Pump 2.48 X 9 - Generic
	10.187	Spyder, Bracket Kit, 6 mm
	50.594	Bolt Kit, Modular Bracket Mount (Purchased)
	50.931	kit, LCI Modular Pump Mount Hardware
50.581	kit, 30' LCI Spyder Pump Power Harness	
57.008	10.213	Spyder 4KG Reservoir Module - Top Spring
	10.221	Label, Caution PIP
	10.183	Spyder, Bottom, 24 Volt + Timer Module SECONDS
	10.177	Ring Module, 15 Port Spyder
	10.173	Cam Spacer
	10.174	Screw Plate Module
	10.190	Bolt Kit - 100mm (2L)
	10.109	Label (bottom) for Pump 1.6 X 9
	10.231	Label, Top of Pump 2.48 X 9 - Generic
	10.187	Spyder, Bracket Kit, 6 mm
	50.594	Bolt Kit, Modular Bracket Mount (Purchased)
50.931	kit, LCI Modular Pump Mount Hardware	
50.581	kit, 30' LCI Spyder Pump Power Harness	
57.042	10.214	Spyder 6KG Reservoir Module - Top Spring
	10.182	Spyder, Bottom, 12 Volt + Timer Module SECONDS
	10.177	Ring Module, 15 Port Spyder
	10.173	Cam Spacer
	10.174	Screw Plate Module
	10.190	Bolt Kit - 100mm (2L)
	10.109	Label (bottom) for Pump 1.6 X 9
	10.231	Label, Top of Pump 2.48 X 9 - Generic
	10.187	Spyder, Bracket Kit, 6 mm
	50.594	Bolt Kit, Modular Bracket Mount (Purchased)
	50.931	kit, LCI Modular Pump Mount Hardware
50.581	kit, 30' LCI Spyder Pump Power Harness	
57.037	10.214	Spyder 6KG Reservoir Module - Top Spring
	10.183	Spyder, Bottom, 24 Volt + Timer Module SECONDS
	10.177	Ring Module, 15 Port Spyder
	10.173	Cam Spacer
	10.174	Screw Plate Module
	10.190	Bolt Kit - 100mm (2L)
	10.109	Label (bottom) for Pump 1.6 X 9
	10.231	Label, Top of Pump 2.48 X 9 - Generic
	10.187	Spyder, Bracket Kit, 6 mm
	50.594	Bolt Kit, Modular Bracket Mount (Purchased)
	50.931	kit, LCI Modular Pump Mount Hardware
50.581	kit, 30' LCI Spyder Pump Power Harness	

Table 1. Modular Series Pump Components.

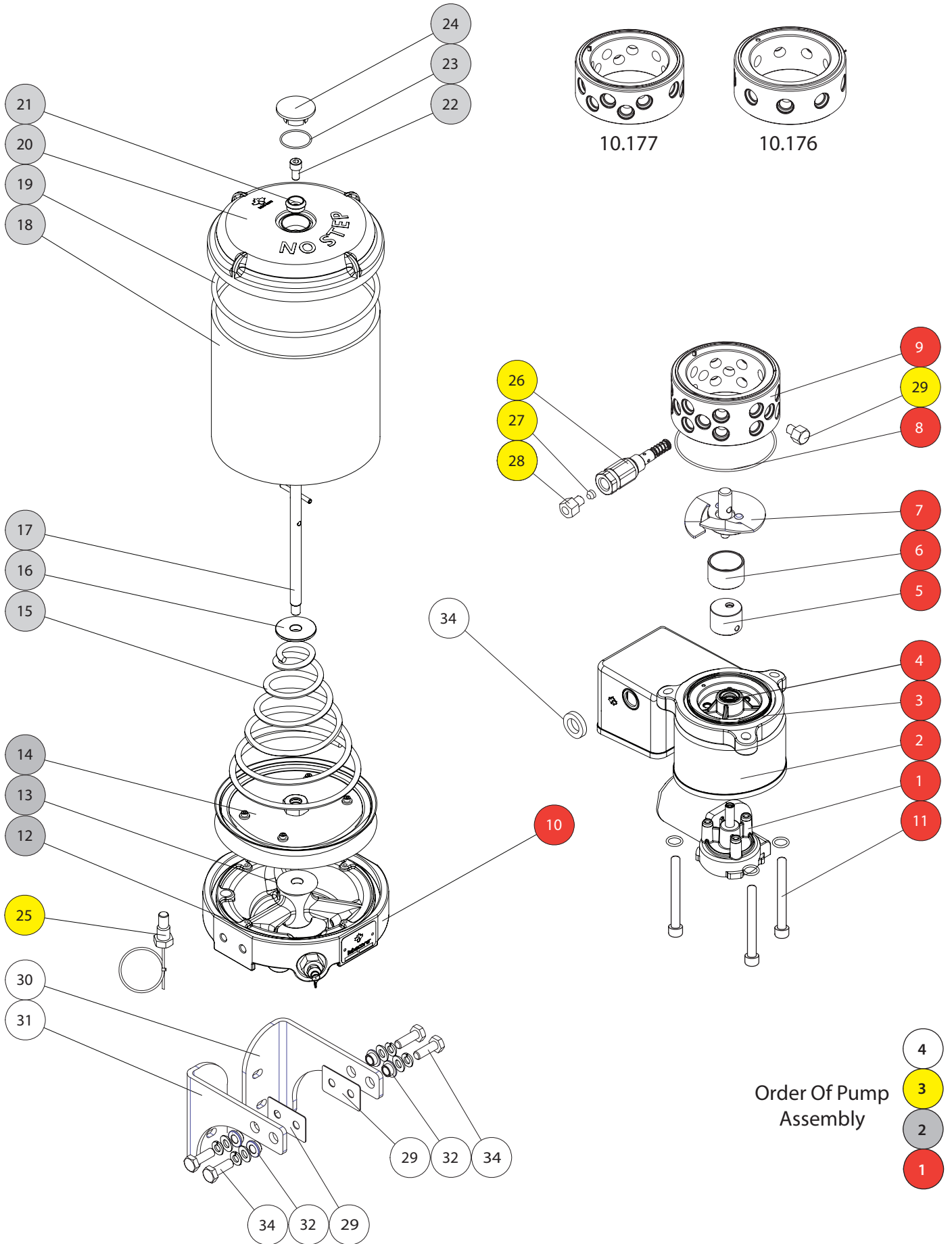
The above listed pumps are base pumps only and do not come with elements, plugs, grease or low, level



Modular Spyder Pump Components Order of Assembly

Pos #	Part #	Description
1	10.261	Motor & Gear Assembly - 12V
	10.262	Motor & Gear Assembly - 24V
2	10.182	Motor Assembly 12V - MLP (Second Timer)
	10.183	Motor Assembly 24V - MLP (Second Timer)
	10.197	Motor Assembly 12V - Progressive (Minute Timer)
	10.198	Motor Assembly 24V - Progressive (Minute Timer)
	10.184	Motor Assembly 12V - No Timer
	10.185	Motor Assembly 24V - No Timer
3	10.267	"O" Ring
4	10.173	Cam Spacer
5+6	10.257 + 10.258	Cam 20mm with Ring (L: Low Profile Ring Module)
	10.259 + 10.260	Cam 30mm with Ring (H: High Profile Ring Module)
7	10.174	Screw Plate Module
	10.176	Ring Module 9 Port (L) (Includes Cam 20mm)
	10.264	Ring Module 9 Port (L) (Excluding "O" Ring)
	10.177	Ring Module 15 Port (L) (Includes Cam 20mm)
	10.265	Ring Module 15 Port (L) (Excluding "O" Ring)
5+6+8+9	10.178	Ring Module 24 Port (H) (includes Cam 30mm)
	10.266	Ring Module 24 Port (H) (Excluding "O" Ring)
10	-	Modular Pump Body
11	10.188	Bolt Kit - 60mm (1L)
	10.189	Bolt Kit - 70mm (1H)
	10.190	Bolt Kit - 100mm (2L)
	10.191	Bolt Kit - 110mm (1L+1H)
	10.192	Bolt Kit - 120mm (2H)
	10.193	Bolt Kit - 160mm (1L+2H)
	10.194	Bolt Kit - 170mm (3H)
12+19	10.007	Reservoir Seal (Top & Bottom)
13	10.114	M10x28x3mm Washer (Guide Rod)
14	10.110	Follower Plate - 4kg & 6kg - Top Spring
15	10.253	PIP™ Spring 4Kg
	10.254	PIP™ Spring 6Kg
	10.213	4KG Reservoir Module- PIP™ (Top) Spring

Table 2. Modular Series Pump Replacement Components.



Modular Spyder Pump Components

Pos #	Part #	Description
24	10.003	Lid Cap
23	10.004	"O" Ring Seal Cover Cap
22	10.011	Lid Bolt - PIP™ Spring Model / Bolt For Reservoir Lid - M8 x 1.25 x 15 mm SS
21	10.008	Reservoir Spacer Bushing
20	10.006	Reservoir Lid
19+12	10.007	Reservoir Seal (Top & Bottom)
18	10.001	Makrolon™ Reservoir 4Kg
	10.207	Makrolon™ Reservoir 6Kg
17	10.251	Guide Rod, 4kg Bottom Spring
	10.252	Guide rod, 6kg Bottom Spring
	10.224	Guide Rod Assembly 4Kg - PIP™ (Top) Spring (Rod with Spring Stopper)
	10.223	Guide Rod Assembly 6Kg - PIP™ (Top) Spring (Rod with Spring Stopper)
16	10.255	Spring Stopper - Washer for PIP™ / Guide Rod
15	10.253	PIP™ Spring 4Kg
	10.254	PIP™ Spring 6Kg
	10.213	4KG Reservoir Module- PIP™ (Top) Spring
	10.214	6KG Reservoir Module- PIP™ (Top) Spring
14	10.110	Follower Plate - 4kg & 6kg - Top Spring
13	10.114	M10x28x3mm Washer (Guide Rod)
23	12.045	Sensor Low Level Modular – 4kg Std & 4/6kg PIP™ Top Spring
	54.128	1/4" Quick Fill Connector- 1/4"M NPT (With Dust Cap)
1	10.261	Motor & Gear Assembly - 12V
	10.262	Motor & Gear Assembly - 24V
34	10.153	Magnet
2	10.182	Motor Assembly 12V - MLP (Second Timer)
	10.183	Motor Assembly 24V - MLP (Second Timer)
	10.197	Motor Assembly 12V - Progressive (Minute Timer)
	10.198	Motor Assembly 24V - Progressive (Minute Timer)
	10.184	Motor Assembly 12V - No Timer
	10.185	Motor Assembly 24V - No Timer
11	10.188	Bolt Kit - 60mm (1L)
	10.189	Bolt Kit - 70mm (1H)
	10.190	Bolt Kit - 100mm (2L)
	10.191	Bolt Kit - 110mm (1L+1H)

Table 3. Modular Series Pump Replacement Components.

Lubecore™ Modular Progressive Parts & Service Components

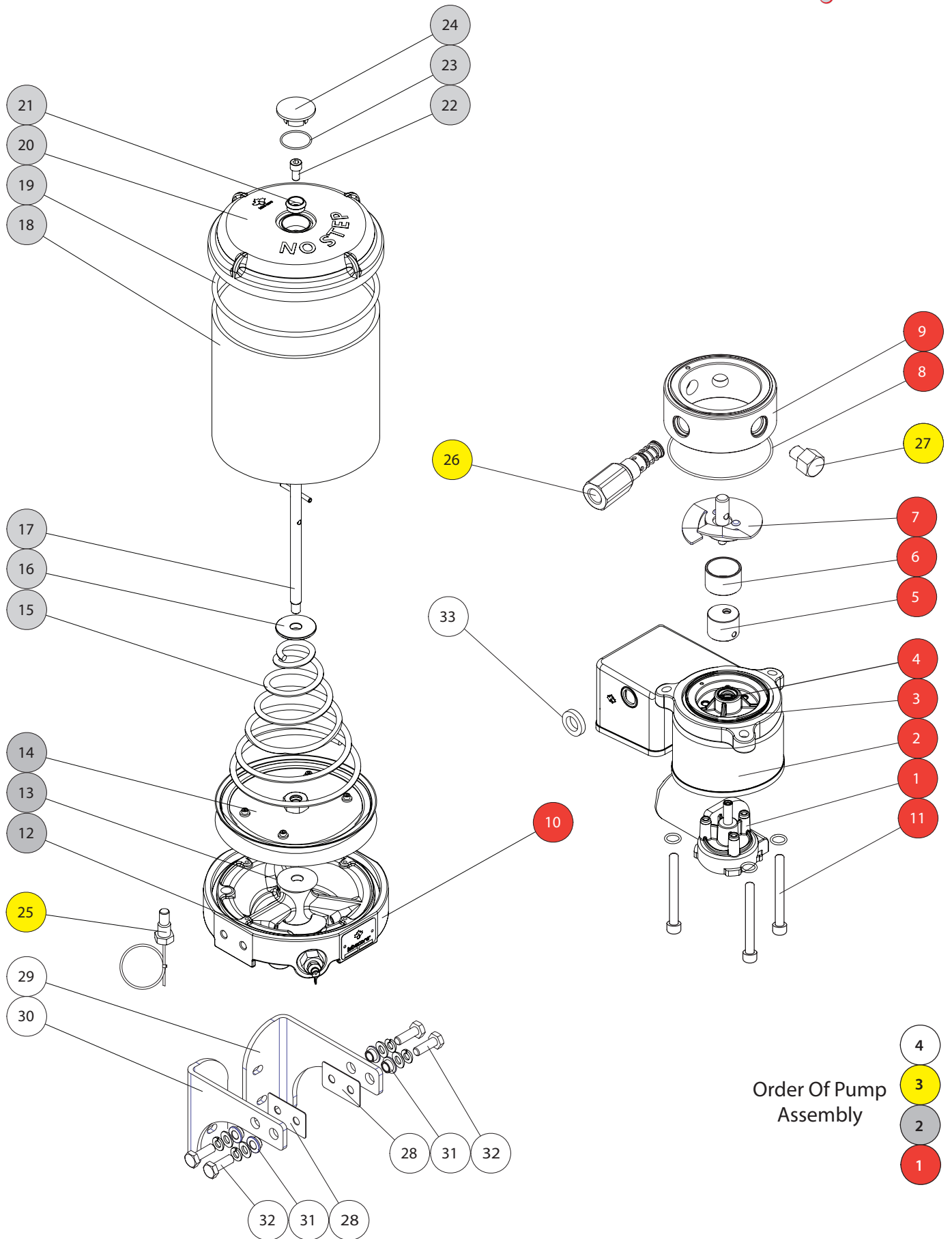


Modular Progressive Pump Base Assemblies

Pump	Part #	Description
57.011	10.213	Spyder 4Kg Res Module
	10.197	Spyder, Bottom, 12 Volt Pro.
	10.175	Ring Module, 3 Port Modular
	10.174	Screw Plate Module
	10.188	Bolt Kit - 60mm (1L)
	10.187	Spyder, Bracket Kit, 6mm
	50.594	Bolt Kit, Modular Bracket
	50.931	Kit, LCI Modular Hardware
	50.581	Kit, 30' Power Harness
57.007	10.214	Spyder 6Kg Res Module
	10.197	Spyder, Bottom, 12 Volt Pro.
	10.175	Ring Module, 3 Port Modular
	10.174	Screw Plate Module
	10.188	Bolt Kit - 60mm (1L)
	10.187	Spyder, Bracket Kit, 6mm
	50.594	Bolt Kit, Modular Bracket
	50.931	Kit, LCI Modular Hardware
	50.581	Kit, 30' Power Harness
57.005	10.213	Spyder 4Kg Res Module
	10.198	Spyder, Bottom, 24 Volt Pro.
	10.175	Ring Module, 3 Port Modular
	10.174	Screw Plate Module
	10.188	Bolt Kit - 60mm (1L)
	10.187	Spyder, Bracket Kit, 6mm
	50.594	Bolt Kit, Modular Bracket
	50.931	Kit, LCI Modular Hardware
	50.581	Kit, 30' Power Harness
57.004	10.214	Spyder 6Kg Res Module
	10.198	Spyder, Bottom, 24 Volt Pro.
	10.175	Ring Module, 3 Port Modular
	10.174	Screw Plate Module
	10.188	Bolt Kit - 60mm (1L)
	10.187	Spyder, Bracket Kit, 6mm
	50.594	Bolt Kit, Modular Bracket
	50.931	Kit, LCI Modular Hardware
	50.581	Kit, 30' Power Harness

Table 1. Modular Series Pump Components.

The above listed pumps are base pumps only and do not come with elements, plugs, grease or low level



Individual Modular Progressive Pump Components Order of Assembly

Position	Part #	Description
1	10.261	Motor & Gear Assembly - 12V
	10.262	Motor & Gear Assembly - 24V
2	10.197	Motor Assembly 12V - Progressive (Minute Timer)
	10.198	Motor Assembly 24V - Progressive (Minute Timer)
	10.184	Motor Assembly 12V - No Timer
	10.185	Motor Assembly 24V - No Timer
3	10.267	"O" Ring
4	10.173	Cam Spacer
5+6+8+9	10.175	Ring Module, 3 Port Progressive (Includes Cam 20mm)
7	10.174	Screw Plate Module
10	-	Modular Pump Body
11	10.188	Bolt Kit - 60mm (1L)
12+19	10.007	Reservoir Seal (Top & Bottom)
13	10.114	M10x28x3mm Washer (Guide Rod)
14	10.110	Follower Plate - 4kg & 6kg -
15	10.253	PIP™ Spring 4kg
	10.254	PIP™ Spring 6kg
	10.213	4KG Reservoir Module- PIP™ (Top) Spring
	10.214	6KG Reservoir Module- PIP™ (Top) Spring
16	10.255	Spring Stopper - Washer for PIP™ / Guide Rod
17	10.251	Guide Rod 4Kg
	10.252	Guide Rod 6kg
	10.224	Guide Rod Assembly 4Kg - PIP™ (Top) Spring (Rod with Spring Stopper)
	10.223	Guide Rod Assembly 6Kg - PIP™ (Top) Spring (Rod with Spring Stopper)
18	10.001	Makrolon™ Reservoir 4Kg
	10.207	Makrolon™ Reservoir 6Kg
20	10.006	Reservoir Lid
21	10.008	Reservoir Spacer Bushing
22	10.011	Cover Bolt - PIP Spring Model / Bolt For Reservoir Lid - M8 x 1.25 x 15 mm SS
23	10.004	"O" Ring Seal - Lid Cap
24	10.003	Lid Cap
25	12.045	Sensor Low Level Modular – 4kg Std & 4/6kg PIP™ Top Spring
26	11.637	Element Progressive Mk2 6cc (SS) M16x1.5
	11.639	Element Progressive MK2 4cc (SS) M16x1.5

Table 2. Modular Series Pump Replacement Components.

Position	Part #	Description
	11.640	Element Progressive MK2 2cc (SS) M16x1.5
	54.128	1/4" Quick Fill Connector- 1/4"M NPT (With Dust Cap)
27	11.033	Element Plug M16x1.5 with "O" Ring for Progressive Ring Module
	10.195	"O" Ring for Progressive Element
28 x 2	10.926	Gasket for Mounting Bracket
29	-	Bracket Arm Left Stainless Steel
30	-	Bracket Arm Right Stainless Steel
	10.187	Bracket Complete Assembly
31 x 4	41.135	Nylon Isolation Bushing
-	12.057	External Timer w/30' Harness
31+32	50.594	Bolt Assembly M10
	50.931	Bolt Assembly Pump Mount 5/16"x3 + 1x5/16" Machine Screw for Magnet
	50.581	30 Feet / 9m Power Harness with Deutsch Connector

Table 2. Modular Series Pump Replacement Components.



lubecore™

Head-office:
Lubecore International, Inc.
7065 Twiss road
Campbellville, Ontario
Canada L0P-1B0
Phone: 1-905-864-3110
E-mail: Info@Lubecore.com
Web site: <http://www.lubecore.com>

Distributor:

<http://www.lubecore.com>



NEXT GENERATION AUTOMATED LUBRICATION