



# lubecore™

## 2016

### ALS

## Mounting Bracket Catalogue

LIPC16.001-02/18/16



**NEXT GENERATION AUTOMATED LUBRICATION**

## Document Information

Title: Parts Manual Automated Lubrication Systems

File ref: Lubecore\_PC\_001

Revision: 00

Publication date: January 2016

Revisions:

All rights reserved. No part of this publication may be copied and/or published by any means without obtaining prior written permission from Lubecore™. Due to continuous product development and improvement Lubecore reserves the right to update parts at any time, the contents of this manual may also be changed without prior notice. This manual applies to the standard version of the product. Lubecore cannot accept liability for any damage arising from the use of this publication. Please contact Lubecore in case of any questions related to the revision of, required service, repairs and or maintenance as described in this publication

# Contents Manual

1	DOCUMENT INFORMATION & DISCLAIMER
2 - 4	PRIMARY PUMP MOUNTING BRACKETS
5	SECONDARY PUMP MOUNTING BRACKETS
6 - 7	MANIFOLD, DISTRIBUTOR & LINING BRACKETS
8	SYSTEM CONTROL MOUNTING BRACKETS
9	PUMP, LINE, TUBING & DISTRIBUTOR PROTECTION
10	MOUNTING SPACERS & SPECIALITY BRACKETS

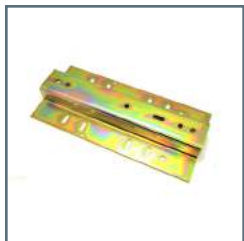
**MOUNTING SYSTEMS:  
PRIMARY PUMP MOUNTING BRACKETS**

Part#	Description	Usage
40.004	Universal Pump Mounting Bracket *	
40.001	4 Kg - Mounting Bracket *	
40.000	6 Kg - Mounting Bracket *	
40.015	Long Pump Mounting Bracket *	Ottawa Shunt Truck
40.027	Pneumatic Pump Backing Plate	Pump Mounting To A Steel Tool or Utility Box
40.101	Pneumatic Pump Backing Plate	Pump Mounting To An Aluminium Tool or Utility Box
40.083	Pneumatic/Hydraulic/Spyder MKII	Outer Frame Mounting System
40.084	Support Post	
54.624	2 x 2 Post Pump Mount *	
40.073	2" Offset Mount *	Kenworth Offset Cab
40.100	Spyder - Deck Mount Short *	
40.087	Spyder - Deck Mount Long *	
40.072	2" Offset, Long *	
40.094	Wide Mounting Bracket *	TICO Shunt Truck
40.052	Spyder/MLP Mounting Bracket - LH 1/4" - 304 SS	
40.053	Spyder/MLP Mounting Bracket - RH 1/4" - 304 SS	
10.187	Spyder, Bracket Kit, 6 mm	Complete Kit
40.077	Spyder 2KG PROG Mounting Bracket - LH 1/4" - 304SS	
40.078	Spyder 2KG PROG Mounting Bracket - RH 1/4" - 304SS	
40.079	Spyder 2KG PROG Deck Mounting Bracket -1/4" - 304	
40.051	2 Kg Flat Gear Pump Mounting Bracket	Can Be Used With All These Mounting Brackets *
40.061	2 Kg Electric Gear & MLP Pumps	In Cab Use
40.080	2kg Gear Pump Mount	Elgin Pelican Vogel / Interlube Factory Mounting Bracket
40.065	Spyder Mounting Part (A)	Kenworth T800 Long Frame, Right Front Spring Hanger Mounting
40.082	Inside the Frame, Post Mount	Inner Frame Mounting Adapter
40.102	HD Spyder Mounting Plate	John Deere 872 Grader
40.211	Pump Elect EP2-Mounting Base	
40.048	Specialty Over Hang Bracket	

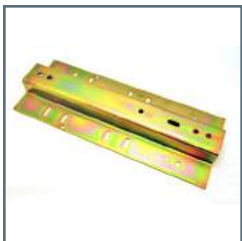
**MOUNTING SYSTEMS:  
PRIMARY PUMP MOUNTING BRACKETS**



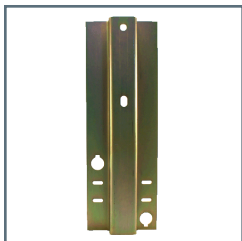
40.004



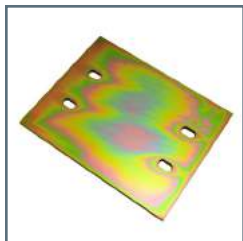
40.001



40.000



40.015



40.027



40.101



40.083



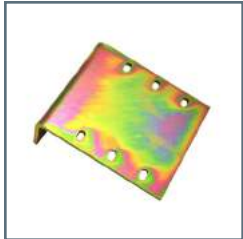
40.084



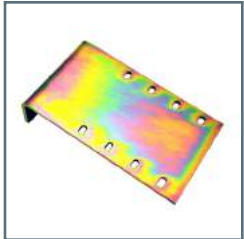
54.624



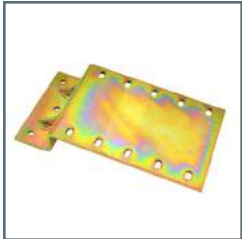
40.073



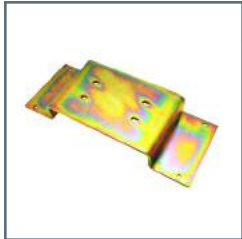
40.100



40.087



40.072



40.094



40.052



40.053



10.187



40.077

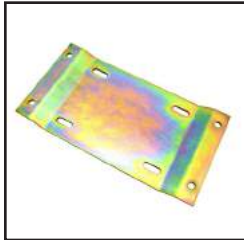


40.078

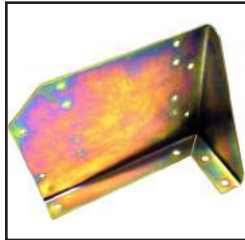


40.079

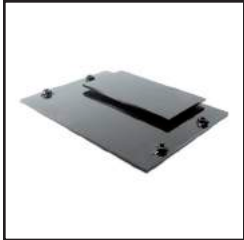
**MOUNTING SYSTEMS:  
PRIMARY PUMP MOUNTING BRACKETS**



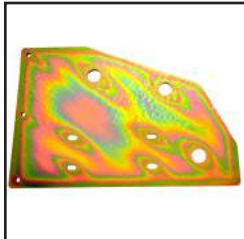
40.051



40.061



40.080



40.065



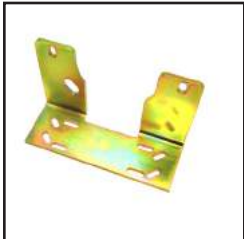
40.082



40.102



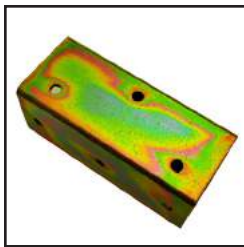
40.211



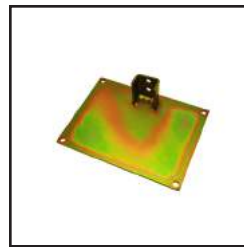
40.048

**SYSTEM: MOUNTING, PROTECTION & ACCESSORIES**  
**SECONDARY PUMP MOUNTING BRACKETS**

Part#	Description	Usage
40.005	Spacer Tube for 4kg & 6kg Pump 3 x 3 x 7	"I" Beam Trailer Adapter
40.014	Exhaust Stack Mounting Adapter	Volvo +
40.076	Exhaust Stack Mounting Clamp - 4 ID	International
40.200	Deck Mounting	Heavy Equipment, Hopper Trailers
40.212	Confined Space Pump Mounting "U" Channel	
40.213	Mounting Support	Anti-Vibration Mounting Support
10.645	Top Bushing	
40.236	Clamping Plate - 6 x 6.5 x .375 Aluminum	Clamping Plate for use with all * Primary Mounting Brackets, Fabrication to Bracket Required "Hopper Trailer Uprights"
40.010	Gear Pump Brace	
40.095	Spyder Deck Mount Support	MACK
40.103	Support Bracket	MACK Sleeper


**40.005**

**40.014**

**40.076**

**40.200**

**40.212**

**40.213**

**10.645**

**40.236**

**40.010**

**40.095**

**40.103**

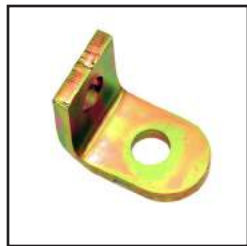
**MOUNTING SYSTEMS:  
MANIFOLD, DISTRIBUTOR & LINING**

Part#	Description	Usage
40.016	8 Port Flat Bracket	WALTCO Tailgate, HEIL Rapid Rail
40.026	5th Wheel Angle Mounting	Fontaine Fifth Wheel Mounted EP0 Manifolds
40.058	Off-set bracket	HEIL Rapid Rail, Etc
40.235	Axle Secondary Line Guide & Support	Directs & Supports All Types of Secondary Lining On Trailer Axles
40.203	6 Port Progressive Distributor Mounting Plate	Full Weld, Pocket Welled or Bolt On
40.204	8 Port Progressive Distributor Mounting Plate	
40.206	10 Port Progressive Distributor Mounting Plate	
40.208	12 Port Progressive Distributor Mounting Plate	
40.210	14 - 18 Port Progressive Distributor Mounting Plate	
40.032	Top Plate for ALL Progressive Divider Blocks - SS	Torque & Vibration Support
41.120	3/8 x 1 1/2 Flat Skt Counter Sunk 82 degree	Can Be Used With All Progressive Distributor Mounting Plates
40.018	Progressive Distributor "Z" Bracket - Short	Bolt On Progressive Distributor Mount
40.023	Progressive Distributor "Z" Bracket - Long	Double Progressive Distributor / Single Low Profile Mount
40.238	Progressive Distributor Axle Mounting Plate with M6 Studs	Trailer Axle Progressive Distributor Mount
11.504	SLD Mounting Bracket Plated Steel	
11.515	SLD Single Block Mounting Plate 304 SS	

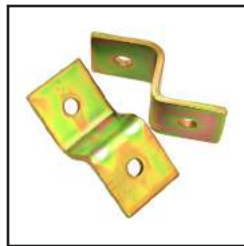
**EP0 MANIFOLD MOUNTING BRACKETS**



40.016



40.026



40.058

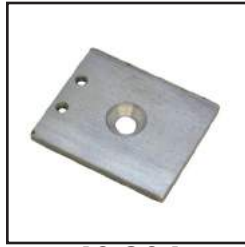


40.235



**PROGRESSIVE DISTRIBUTOR MOUNTING BRACKETS & PLATES**

40.203



40.204



40.206



40.208



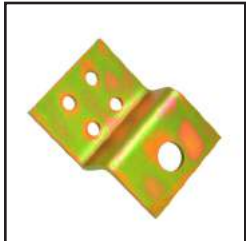
40.210



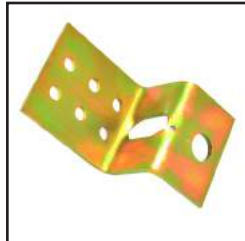
40.032



41.120



40.018



40.023



40.238

**SLD MOUNTING BRACKETS**

11.504



11.515

**SYSTEM CONTROL BRACKETS**

Part#	Description	Usage
13.253	Square Base Surface Mount	12.057 - MKII Progressive Externalized Timer
13.251	Adjustable Knuckle Mount	
13.252	6" Adjustable Knuckle Mount	
40.042	Mk2, HD & LCT Timer Control Mount	Curbsiders / Gear Pump / HD Equipment Cabinet
40.116	PLC ( Programmable Logic Controller ) Mounting Plate	Quint Pump
40.012	Mk2 Progressive Trailer Timer Vertical Remote Mount Short	
40.022	Mk2 Progressive Trailer Timer Vertical Remote Mount Long	
40.070	Mk2 Progressive Trailer Timer Vertical Pump Mount	
40.068	Pump Mounted Divider Valve Mount	Dual System Installs



13.253



13.251



13.252



40.042



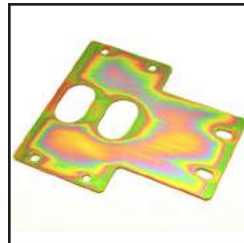
40.116



40.012



40.022



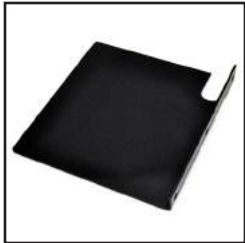
40.070



40.068

## PUMP, LINE, TUBING, FITTING & DISTRIBUTOR PROTECTION

Part#	Description	Usage
40.071	Stone Deflector ( 40.069 - Part B )	
40.088	Pneumatic Pump Stone Guard Mounting Flange	2 Required
x	Pneumatic Pump Stone Guard	
40.066	WALTCO Cylinder Tailgate Pin Guards LH	3 Per Tailgate Required
40.067	WALTCO Cylinder Tailgate Pin Guards RH	
40.069	Floating Pin Retainer Cap	HIAB 410SX Crane
40.024	Weld Block 1.75 X 1.75 x .625 - 1/8 (F) BSPT x 1/8 (F) BSPT	Front Loader Bucket Pins
40.107	Progressive Distributor Protection Plate	
40.019	Protection Ring - 2-7/8 OD X 2-3/8 ID	Fitting Protection
40.025	Protection Ring - 3-1/2 OD X 3-1/8 ID	
40.050	Protection Ring - 2-3/8 OD X 2 ID	
40.247	Protection Ring, Notched at Cut	JDI Vactor Arm
40.248	Protection Ring, Notched Opposite of Cut	JDI Vactor Arm



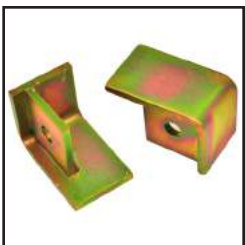
40.071



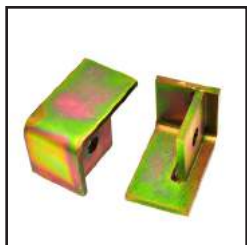
40.088



40.069



40.066



40.067



40.024



40.107



40.019



40.025



40.050



40.247



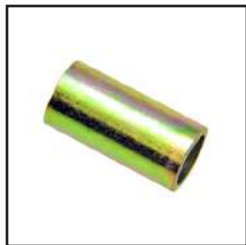
40.248



40.019

## SYSTEM SPACERS & SPECIALTY BRACKETS

Part#	Description	Usage
40.002	Spacer Tube	All 4 & 6 Kg Mounting Brackets In In Conjunction With 40.005
40.007	Spacer Tube	5 & 6" Trailer Axle Manifold Mounting
40.013	Spacer Tube	Hand Filler Pump
40.029	Spacer Tube	5 - 3/4" Trailer Axle Manifold Mounting
40.038	6" Clamp Collar Clamp	HEIL Rapid Rail Paddle Hub
40.044	Dog Bone Clamp	Wheel Loaders
40.057	Mainline Tee Angled	HEIL Rapid Rail
40.008	Mainline Tee	From Trailer Body To Axle Mounted Manifolds
40.239	Mainline Extended Access	Fassi 410FX Forming Crane
40.006	5" Trailer Axle Clamps ( 2 Required )	Complete Kit 50.031
40.017	5.75" Trailer Axle Clamps ( 2 Required )	Complete Kit 50.832
	6" Trailer Axle Clamps ( 2 Required )	Complete Kit 50.833



40.002



40.007



40.013



40.029



40.038



40.044



40.057



40.008



40.239



40.006



40.017

