



NEXT GENERATION AUTOMATED LUBRICATION

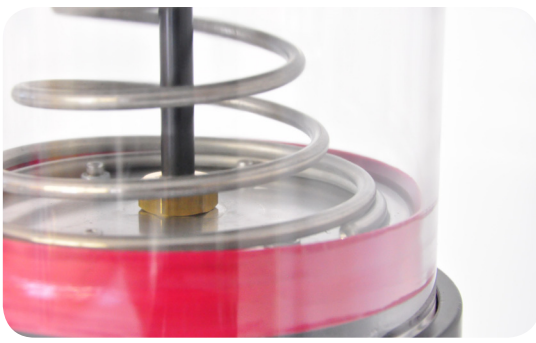
Modular Progressive Pump



- Extend Your Component Life Using EP2 Grease
- Maintenance Intervals Are Optimized for Your Operation
- Clear 4 & 6 Kg - Makrolon™ - Reservoirs Available
- Stainless Steel Follower Plate With PIP™ Spring - Provides Clear Grease Level Indication
- Available In 12 & 24 VDC
- Low Level Proximity Sensor - (Optional)
- Fully Potted - IP68, Magnetically Programmable Timer Is Protected From The Elements
- Heavy Duty Insulated Mounting System
- Front Mounted LED Indicates Power/Cycle/Mode
- 3 Delivery Ports Provide a Variety of Pump Configurations

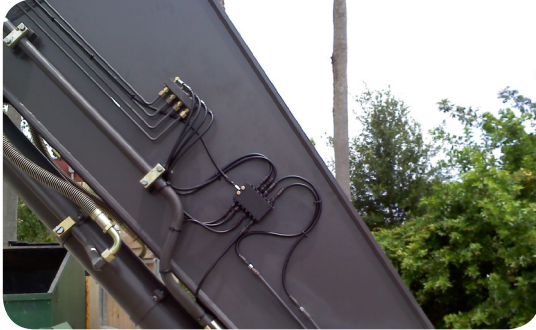
Lubecore™ Automated Lubrication Systems enhance your preventative maintenance program and keeps your greaseable components in excellent condition – resulting in safe and reliable equipment performance.

This maintenance tool keeps your equipment on the road, **earning you money!**



MODULAR PROGRESSIVE PUMP

The Modular Progressive Automated Lubrication System enhances the safe operation of your equipment. Significantly reduce wear, extend maintenance intervals, reduce downtime of your equipment, by delivering continuous lubrication to critical components such as automatic brake adjusters, clevis pins, spring hangers on highway equipment; and lift cylinders, ring gears, boom and stick pins on heavy equipment.



The Modular Progressive pump can be installed in various applications ranging from tractors and trailers in the transport sector to skid steers, wheel loaders and excavators in the construction and mining sectors. With application of correct size and style of tubing, this system is capable of handling a wide range of lubricants, providing unprecedented flexibility.

Using a 1/4" female NPT thread allows for a wide variety of commonly available commercial fittings to be used. The Modular Progressive pump is an excellent choice as a replacement pump for all competitive brands.

Contact us today!



Lubecore International Inc.
7065 Twiss Road
Campbellville, ON
L0P 1B0
Tel 905.864.3110

www.lubecore.com

LUBECORE™ TURNKEY SOLUTION

The Lubecore™ Automated Lubrication System is installed on your equipment by trained professionals. Our expertise will guarantee that the automated lubrication system will meet your specific needs.

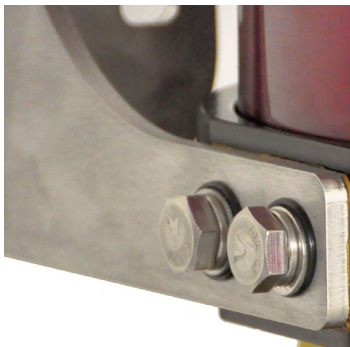
We also offer on-site training for your technicians and operators, through our extensive distributor network, which will help familiarize them with the system and ensure years of trouble free operation!.

FEATURES

The Modular Progressive pump features an integrated and potted timer that is rated IP68. Environmental conditions such as moisture, condensation, or corrosive liquids will have no effect on the pumps internal electronics. The pumps timer is fully programmable to accommodate many variables such as type of lubricant, system working environment, and equipment specifications. The pump can be equipped with either a 1/4" quick disconnect, a standard grease fitting or our HD inline filter, which prevents contamination from particles as small as 200 Microns. There is a magnetically activated switch and LED display integrated into the front face of the pump housing. The display indicates presence of power, cycle mode selection and programming state, which all can easily be operated by means of a magnet, delivered with each pump.

The pump accepts up to 3 metering elements providing a maximum grease output of 20.7 cc/min. Allowing for the optimum lubricant delivery for every situation and requirement, from small to large equipment. The pump includes a clear Makrolon™ impact-resistant reservoir, Positive Inlet Pressure spring (PIP™) equipped with a stainless steel follower plate and a bright red seal. These work in unison providing a positive pressure on the pump elements for consistent EP2 grease delivery at extreme low temperatures, self-bleeding and easy visual checking of grease level in the reservoir.

Stainless Steel Brackets



Magnetic Timer Operation



Potted Electronics



Stainless Steel Elements

