



Guide Rod Spacer Bushings

We have made 2 new guide rod spacer bushings to help create proper tension when installing the lids on 4kg and 6kg pumps. Lubecore specs call for 3mm pre-tension between top of guide rod and the reservoir lid. This means that when the guide rod bolt is not installed, there should be approximately 3mm distance from the top of the guide rod to the bottom of the cavity where the guide rod spacer sits. The new spacers provide an extra 3 or 5mm pre-tension. See Drawing 1 for spec'd 3mm pre-tension. Drawing 2 shows no pre-tension and drawing 3 shows -3mm pre-tension.

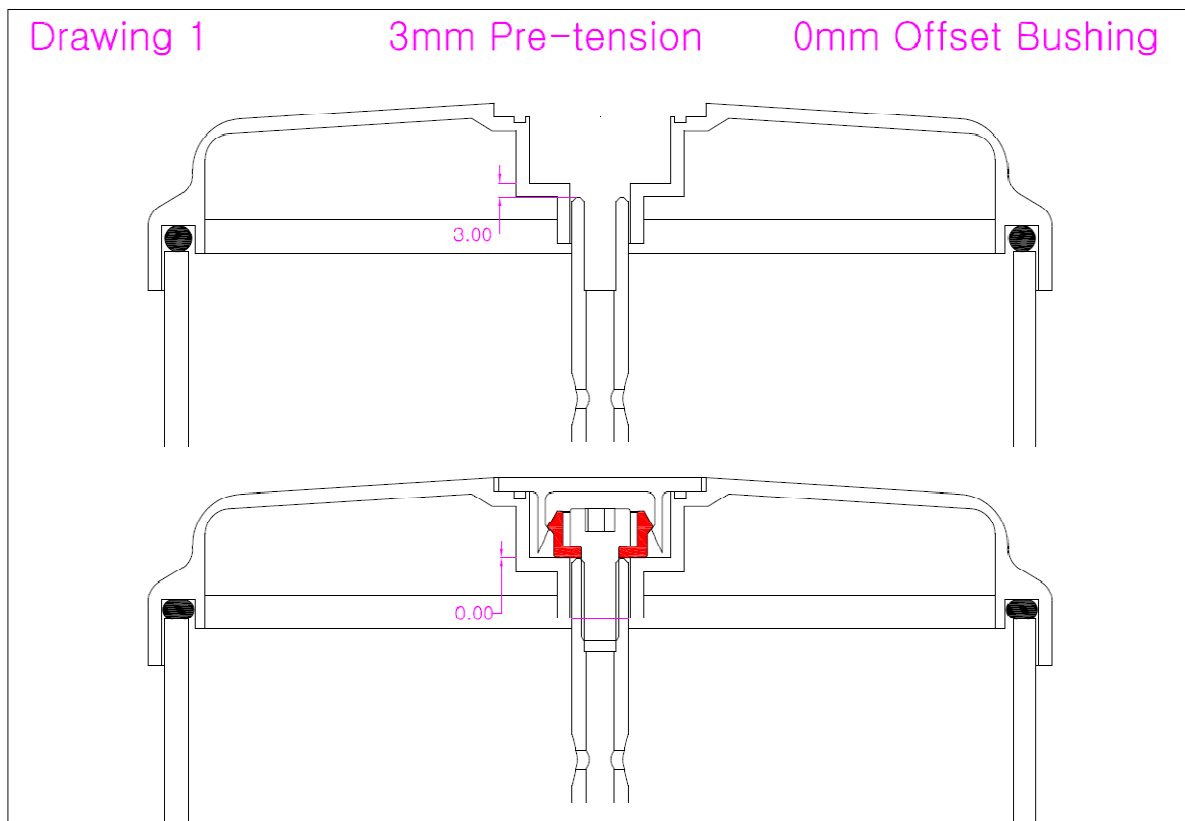
These spacers are for quick in-field repairs. Instead of changing out complete pumps, these spacers can be used to help stop reservoir leaks.

10.008 is original flat bottom bushing (use original 10.009 M8-1.25x20 SS bolt)

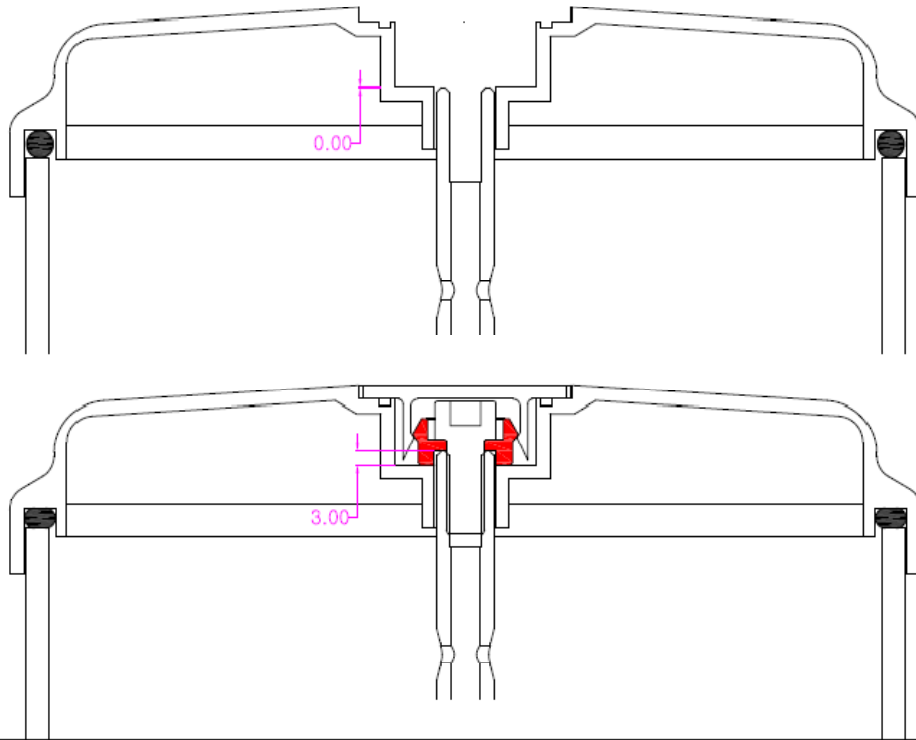
10.087 is 3mm off-set bushing (use original 10.009 M8-1.25x20 SS bolt)

10.088 is 5mm off-set bushing (use with low head 10.089 M8-1.25x20 SS bolt)

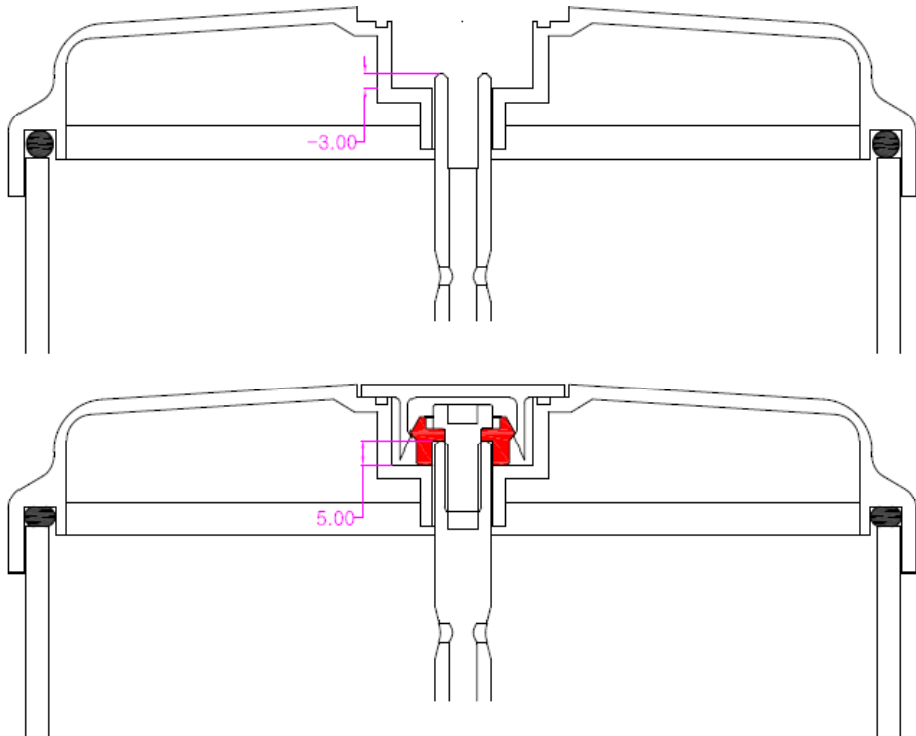
50.567 - Kit, Spacer Bushing for Pump - 5mm Offset w/ Bolt



Drawing 2 0mm Pre-tension 3mm Offset Bushing



Drawing 3 -3mm Pre-tension 5mm Offset Bushing



Original
10.009 Bolt

Original + 3mm
10.009 Bolt

Original + 5mm
10.089 Bolt

