

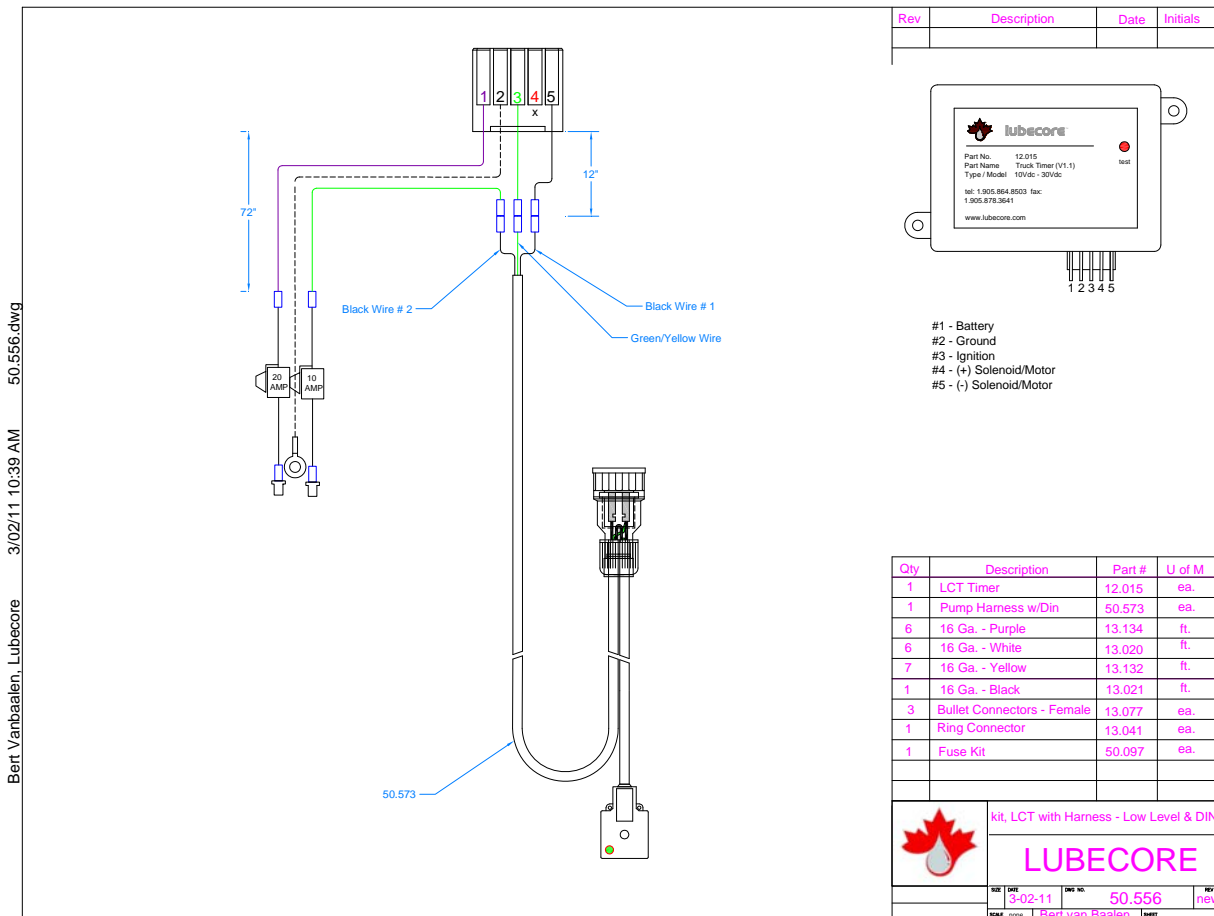


## Wire Harnesses 50.556 & 50.556RevA

### 50.556

This is the original harness used for this application; however, there is a problem with it (power going to ground through the low level switch) and needs to be replaced with the harness shown on the next page.

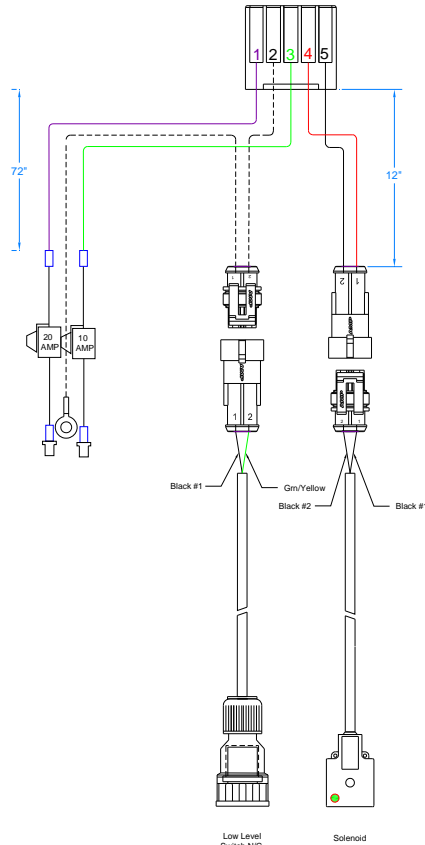
Please be sure to check your equipment for this harness. The harness that requires replacement can be most easily identified by the wire connection to the low level switch. If there are two wire leads going into the round connection, the harness is to be replaced.



Bert Vanbaalen, Lubecore 3/02/11 10:39 AM 50.556.dwg

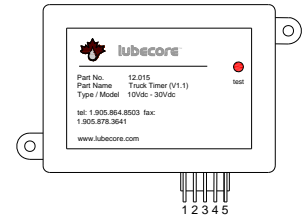
# 50.556 RevA

Bert van Baalen, Lubecore 4/27/11 12:51 PM 50.556 RevA.dwg



Timer Connections  
 #1 - Battery  
 #2 - Ground  
 #3 - Ignition  
 #4 - (+) Solenoid/Motor  
 #5 - (-) Solenoid/Motor

Rev	Description	Date	Initials
A	Replace 50.573 w/loose pts.	4/27/11	BvB



Qty	Description	Part #	U of M
1	LCT Timer	12.015	ea.
1	Din Connector w/ 30' cable	13.109	ea.
7	16 Ga. - Purple	13.134	ft.
9	16 Ga. - White	13.020	ft.
8	16 Ga. - Yellow	13.132	ft.
1	16 Ga. - Red/Black	13.031	ft.
1	Ring Connector	13.041	ea.
1	Fuse Kit	50.097	ea.
2	Connector AMP(F)	13.052	ea.
4	Terminal Sockets	13.053	ea.
2	Connector AMP(M)	13.086	ea.
4	Terminal Pin AMP	13.087	ea.
8	Seal AMP	13.054	ea.
1	Schlemmer Kit Straight	50.236	ea.
30	PVC Jacketed Wire	13.000	ft.

kit, LCT with Harness - Low Level & DIN

## LUBECORE

SST DATE	3-02-11	SPE. NO.	50.556	REV	A
SST NAME	Bert van Baalen		SHEET		