

## Lubecore Communication

**Subject: Pump Isolation Mounting System**

**Date: April 12, 2013**

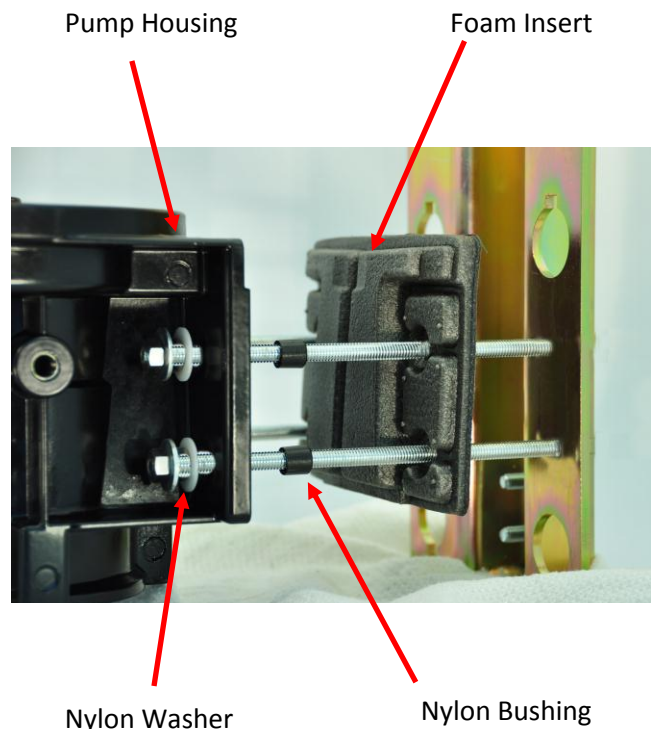
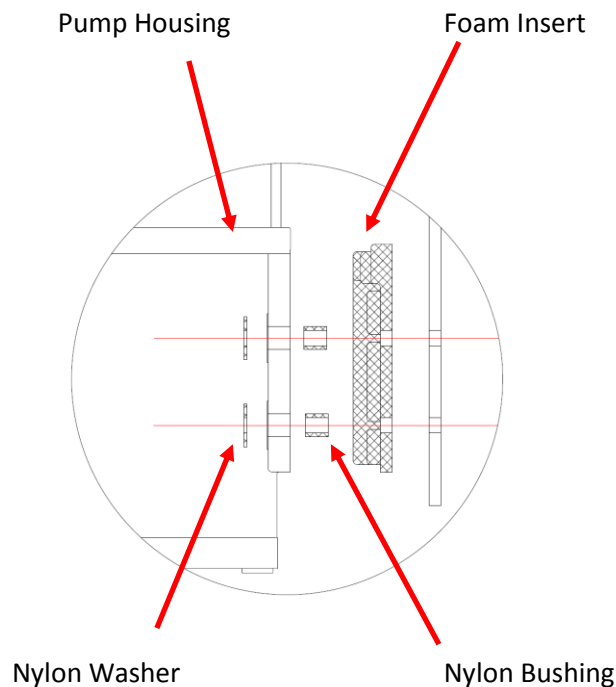
Lubecore provides the **Pump Isolation Mounting System** to deliver a *quality and competitive* solution to eliminate galvanic corrosion when dissimilar metals are used together, i.e. aluminum and plated steel.

### Key Features:

- Closed cell foam insert which fits precisely into back of pump housing to keep pump housing from coming into contact with steel mounting plate. This insert also fills pockets in the casting, stopping them from filling up with corrosive salt, sand and road dust.
- Nylon bolt bushings isolate the bolt from pump body.
- Nylon washers keep bolt heads & washers from coming into contact with pump housing.

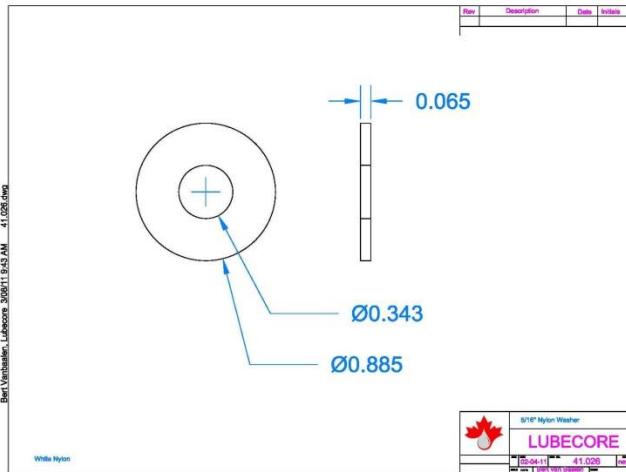
### Important!!!

Please note that pump failure due to corrosion started from not using the nylon washers will void the warranty on the pump.





41.026 - Flat Washer 5/16 (.343 ID X .885 OD) Nylon



The Lubecore 50.070 Pump Mounting Hardware Kit includes 4 of the 41.026 Nylon washers.

