

# Lubecore Communication

**Subject: New Brackets from Lubecore**

**New Brackets Available**

Here is a breakdown of the new brackets available and the corresponding information.

Part #	Description	Picture	World Price Each
40.083	Bracket, Pneumatic/Hydraulic/Spyder MKII		\$ 80.00
40.084	Bracket Support Post		\$ 60.00
40.086	Frame Bracket Western Star with Support Post Allows the user to utilize the frame bolts that exist on the rail of the Western Star. Customer specified bracket.		\$ 130.00

## New Bracket Applications

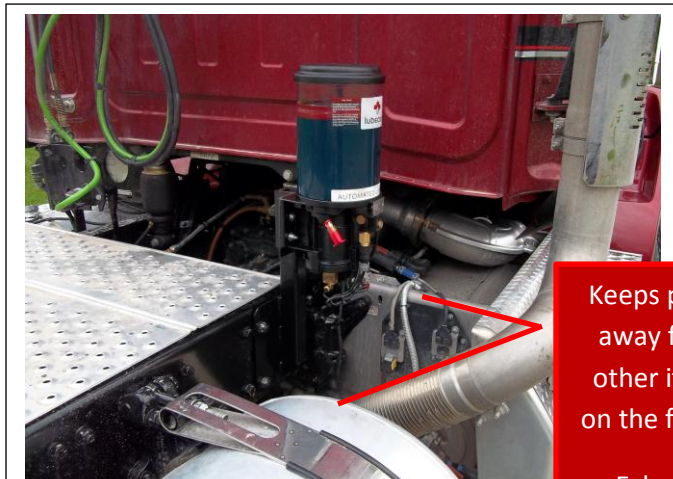
There are a lot more items being mounted to the frame rail of the truck than there used to be. That leaves Lubecore installation technicians with fewer options to mount the pump. The intent of these new brackets is for just that situation where there is no room left for the Lubecore pump to be installed. The new 40083 along with the 40084 can get you in a spot where you previously could not. It allows for a clean and safe frame rail installation without taking up a large footprint.

In this application, the Lubecore installation utilized the 40.086 bracket for two reasons;

1. Western Star did not want us to drill holes in the frame rail
2. There was not enough room to mount directly to the frame without the pump rubbing on something nearby (ie. Exhaust stack).

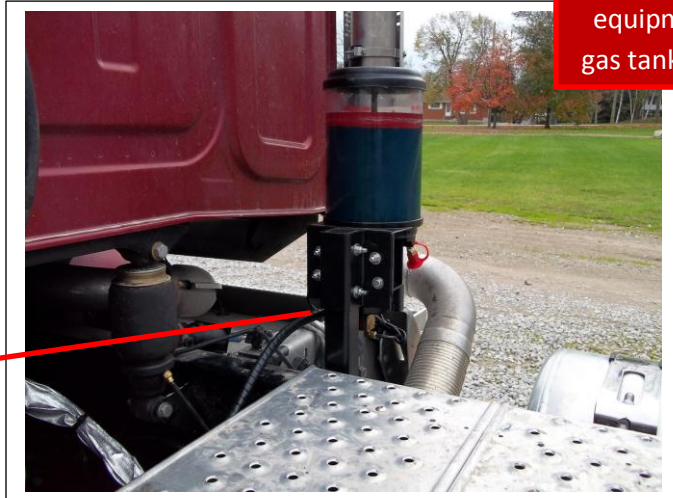


Allows the pump to fit in very narrow spot on frame rail



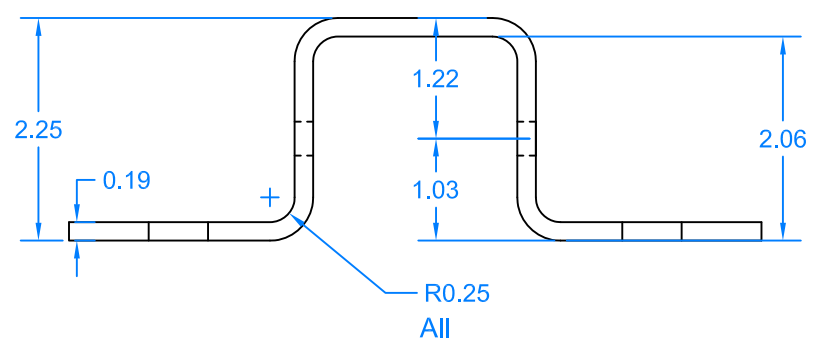
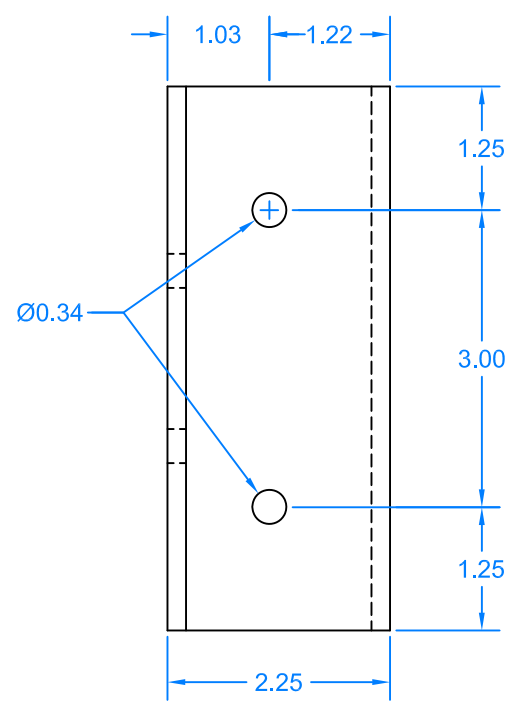
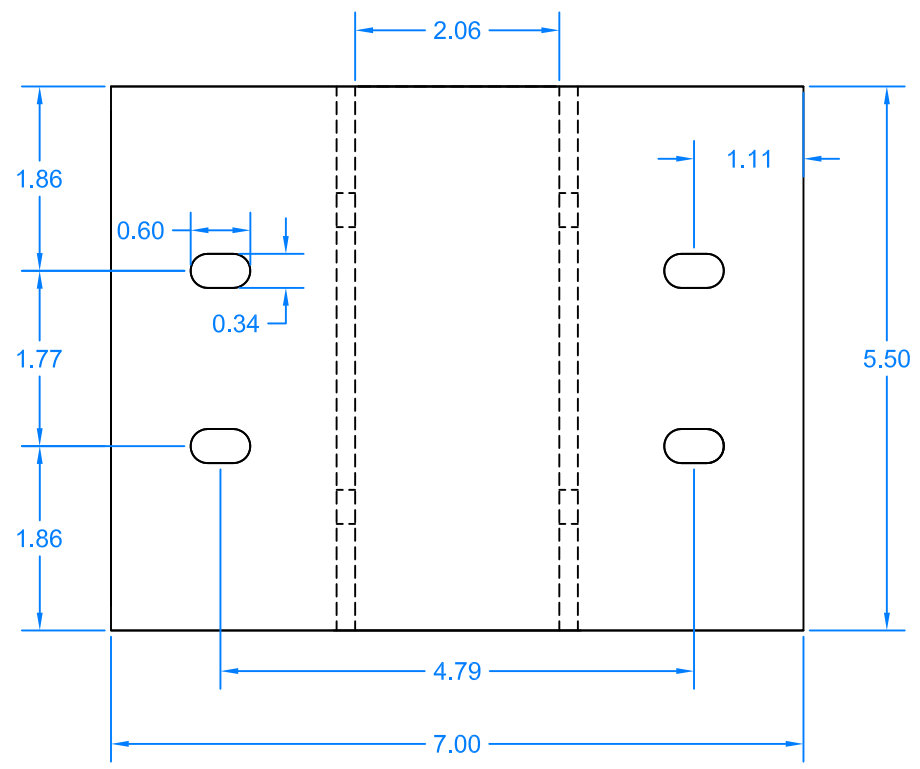
Keeps pump away from other items on the frame.

Exhaust equipment, gas tanks etc.



The pump can be installed to clear the deck behind the cab. The pump can be faced toward the left, toward the right, face back or forward. Lots of options.

Rev	Description	Date	Initials



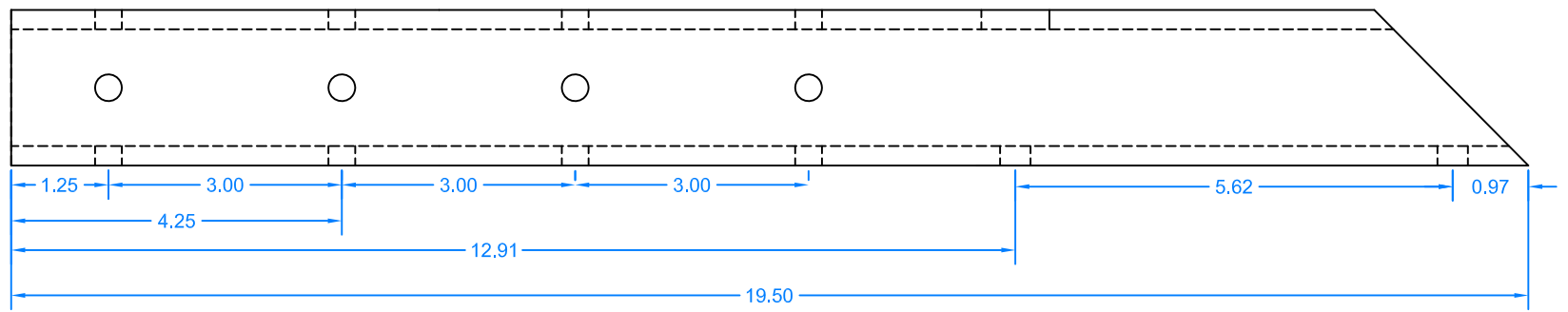
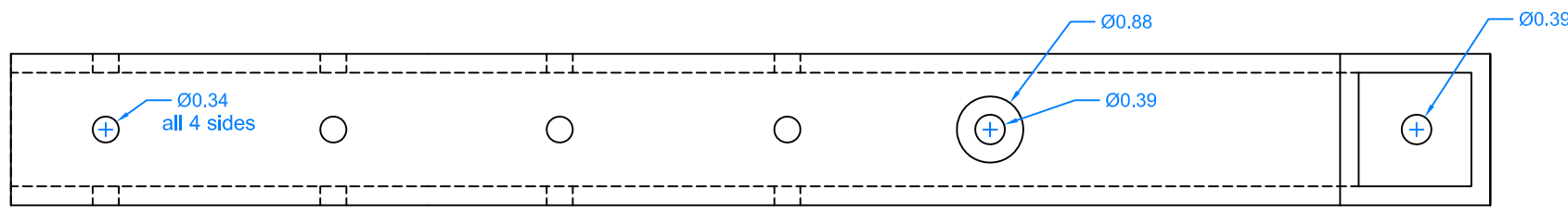
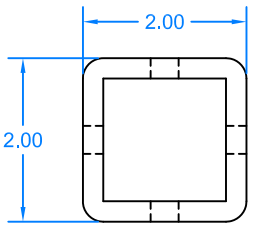
Material:  
Steel  
Plated Zinc Di-Chromate

NOTE:  
BREAK ALL SHARP EDGES  
TOLERANCE = +/- .003"

THE INFORMATION CONTAINED IN THIS DRAWING IS THE SOLE PROPERTY OF LUBECORE INTERNATIONAL. ANY REPRODUCTION IN PART OR AS A WHOLE WITHOUT THE WRITTEN PERMISSION OF LUBECORE IS PROHIBITED

	Post Bracket - Complete		
	LUBECORE		
SIZE	DATE	DWG NO.	REV
	10/01/13	40.083	new
SCALE	Bert van Baalen		SHEET
none			

Rev	Description	Date	Initials



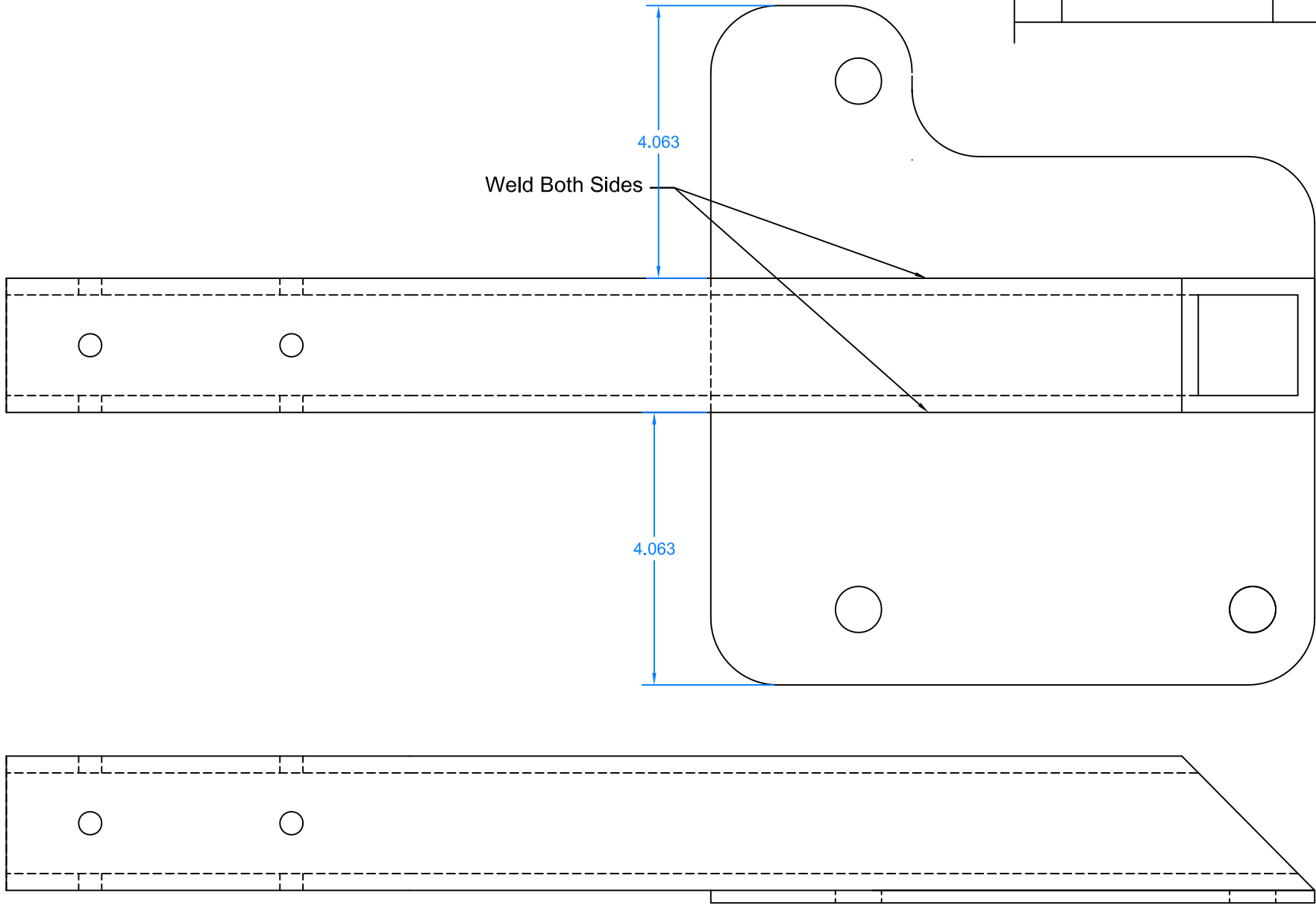
Material:  
Steel  
Plated Zinc Di-Chromate

NOTE:  
BREAK ALL SHARP EDGES  
TOLERANCE = +/- .003"

THE INFORMATION CONTAINED IN THIS DRAWING IS THE SOLE PROPERTY OF LUBECORE INTERNATIONAL. ANY REPRODUCTION IN PART OR AS A WHOLE WITHOUT THE WRITTEN PERMISSION OF LUBECORE IS PROHIBITED

	Bracket Support Post		
	LUBECORE		
SIZE	DATE	DWG NO.	REV
	10/01/13	40.084	new
SCALE	Bert van Baalen		SHEET
none			

Rev	Description	Date	Initials



Material:  
Steel  
Plated Zinc Di-Chromate

NOTE:  
BREAK ALL SHARP EDGES  
TOLERANCE = +/- .003"

THE INFORMATION CONTAINED IN THIS DRAWING IS THE SOLE PROPERTY OF LUBECORE INTERNATIONAL. ANY REPRODUCTION IN PART OR AS A WHOLE WITHOUT THE WRITTEN PERMISSION OF LUBECORE IS PROHIBITED

	Post Bracket - Complete		
	LUBECORE		
SIZE	DATE	DWG NO.	REV
	10/01/13	40.086	new
SCALE	Bert van Baalen		SHEET
none			