



Lubecore Product Announcement

Manual Grease Bank for Remoting Grease Points

Lubecore announces the latest addition to our product line – the Manual Grease Bank system. This product is suited for remoting grease fittings in a stand-alone system, or complimentary to a Lubecore automated lubrication system (ALS). In some installations of ALS, there are components on a machine that cannot simply be connected to the ALS – such examples include refuse packer blades, truck mounted cranes, and forklift frames. To maximize the efficiency of the manual lubrication required on the machine, the grease fittings are remoted to an easily accessed location – reducing service time while improving mechanic safety and ease of access. When used with Lubecore Korilla tubing, the installation is durable, compact, and cost effective.

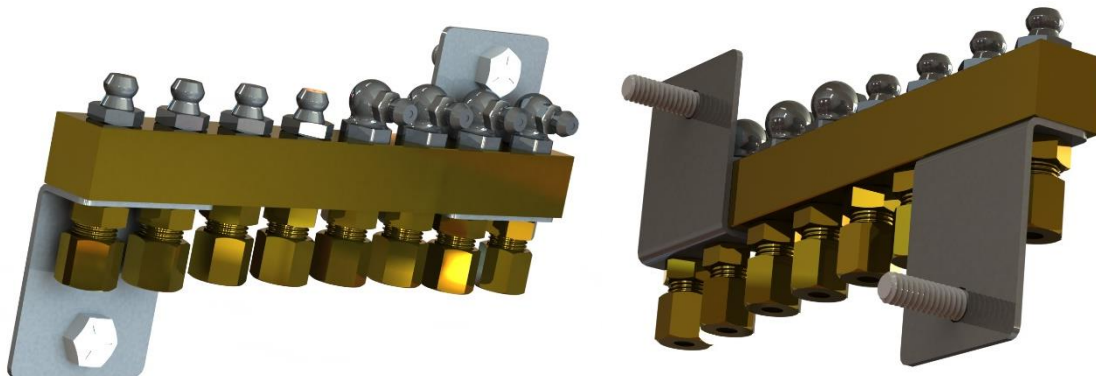
How to Implement:

The grease bank itself is sold as a long strip of brass bar which has had 32 holes cut and threaded to 1/8 BSPP. The brass bar can be cut with a hacksaw or angle grinder on site to accommodate the number of ports needed. In order to mount the bank, brackets mount underneath the tube fittings to secure the bank tight to the machinery without added hardware. Brass and stainless steel components make the grease bank ready for a long life of outdoor use.



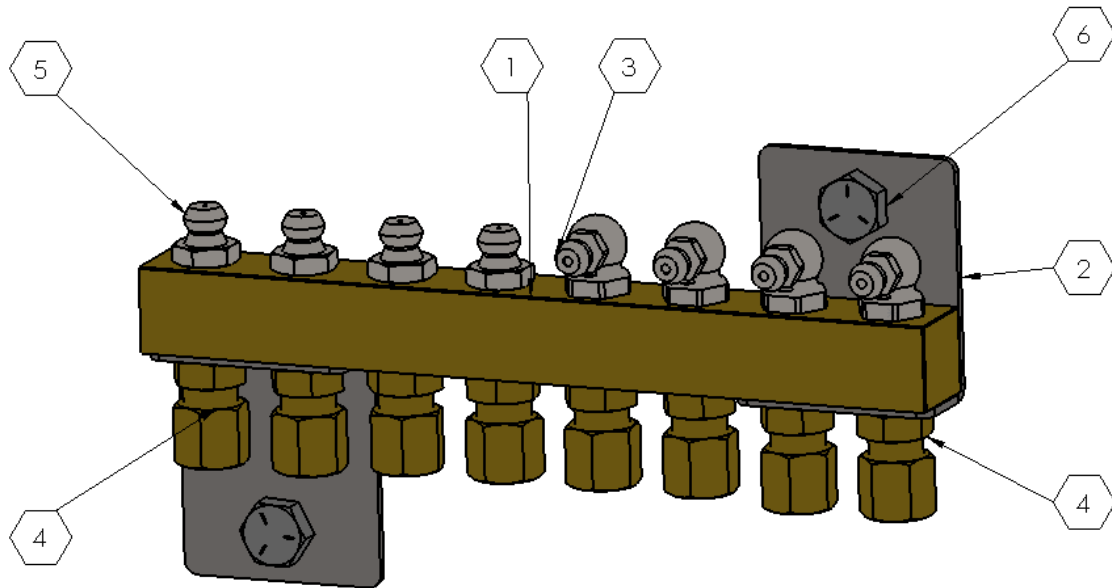
Assembly Example:

Here the bar has been trimmed down to 8 positions. Straight and 90 degree BSPT grease zerks are available to make it easy to mount, and easy to supply grease to with a manual grease gun. Please note that NPT threaded zerk fittings will not work with this system.



Note: Brackets can be used in multiple ways

Components:



ITEM NO.	PART NUMBER	DESCRIPTION	QTY.
1	41.222	5/8" x 24" Square Bar - trimmed to 8 ports	1
2	40.089	Bracket, Manual Bank Mounting SS	2
3	21.253	Grease Zerk X 1/8 BSPT x 90°	4
4	20.022	Straight Compression 1/8 BSPT X 5mm	8
5	21.252	Grease Zerk X 1/8 BSPT	4
6	41.055	Hex Bolt 1/4 - 20 X 1 Grade 5 PLTD	2

Installation Photos:



**Contact Lubecore today for price and availability
Phone: (905) 864 -3110 Email: info@lubecore.com**